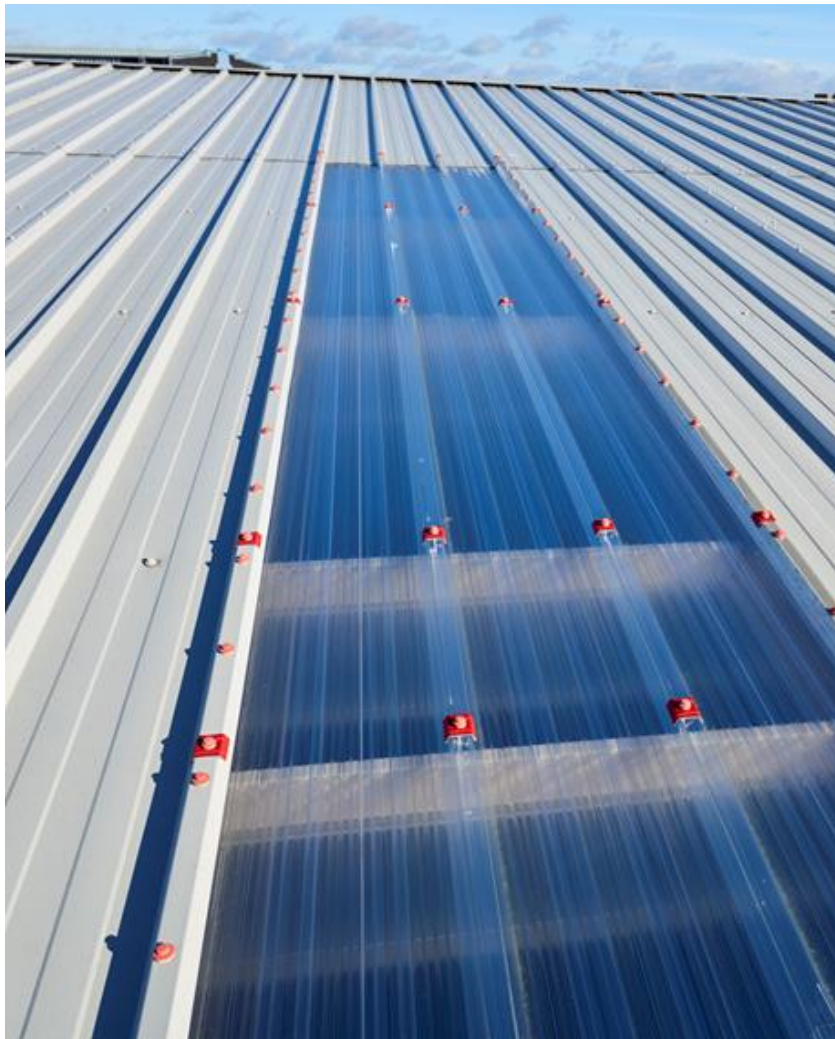




Kingspan Technical Update EU110

Kingspan DLTR 75mm End Lap



Kingspan KS1000 DLTR 75mm End Lap

The purpose of this Kingspan Technical Services Update is to make you aware that the KS1000 DLTR rooflight range (1.6, 1.3, 1.0, 0.80) is now only available with a 75mm cut back.

The 150mm cut back option has been withdrawn and replaced with the 75mm option with immediate effect. Any end lap incorporating our KS1000 DLTR rooflight range would need to be formed using the 75mm Class A End Lap detail.

Please contact the Technical department for the latest set of construction details for the KS1000 DLTR rooflight with the 75mm end lap.

Should you have any queries on the above or require further information, please do not hesitate to contact the Kingspan Technical Services Team(s).

Regards,

Kingspan Insulated Panels Technical Services

UK: technical@kingspanpanels.com

UK: 0800 587 0090

IRL: technicalinsulatedpanelsireland@kingspan.net

IRL: 00353 42 96 98529

UK

Kingspan Limited

Greenfield Business Park No. 2,
Greenfield, Holywell, Flintshire,
North Wales, CH8 7GJ
T: +44 (0) 1352 716100

www.kingspanpanels.co.uk

Ireland

Kingspan Limited

Carrickmacross Road
Kingscourt
Co.Cavan

A82 E897

T:+353 42 9698 577

www.kingspanpanels.ie

For the product offering in other markets
Please contact your local sales representative
or visit www.kingspanpanels.com

Care has been taken to ensure that the contents of this publication are accurate, but Kingspan Limited and its subsidiary companies do not accept responsibility for errors or for information that is found to be misleading. Suggestions for, or description of, the end use of application of products or methods of working are for information only and Kingspan Limited and its subsidiaries accept no liability in respect thereof.