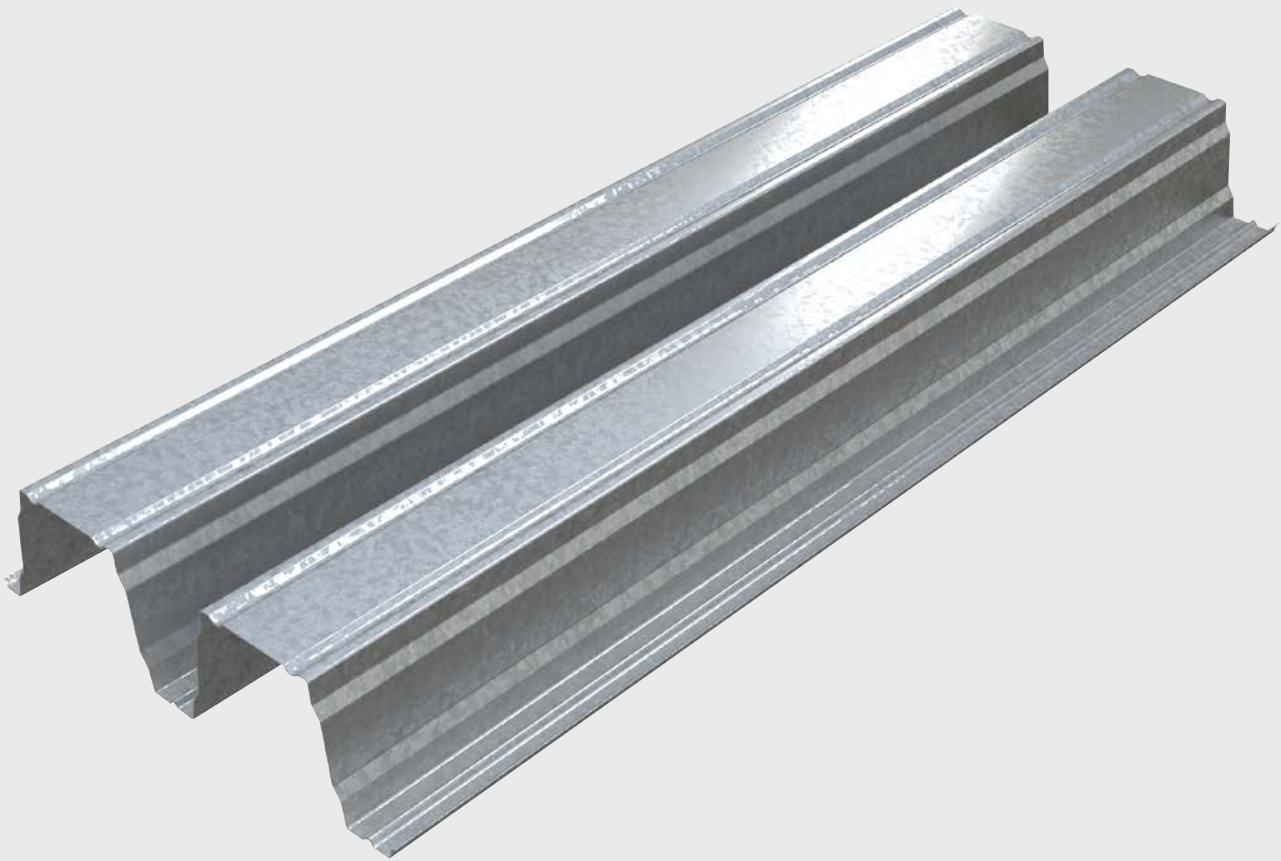


Insulated Panels
Standing Seam Systems

Protected by



RD 200/750 Structural Deck Product Data Sheet

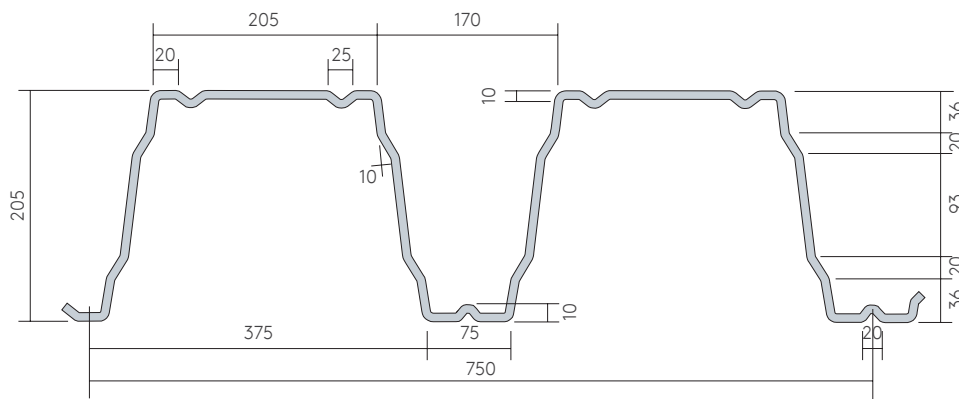


Structural Deck – 200/750

Technical Data

RD 200/750 structural deck offers greater spanning capabilities than traditional liner systems. Using a decking system as the primary covering of the roof allows designers to span greater distances between fixing centres and carry greater roof loads.

The unique profile design affords simplistic installation in single, double or indeed multiple span applications.

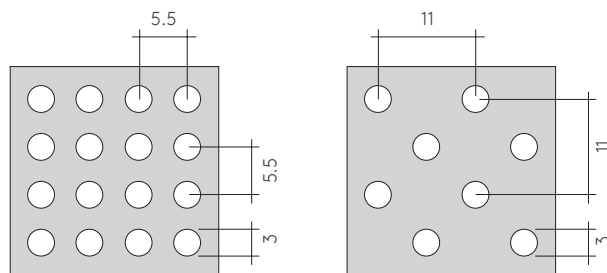


Product Specification

Materials:	Steel: S350GD with either a Z275 galvanised (ASTM A653) or AZ150 AluZinc (ASTM A792) coating
Coatings:	Kingspan PVDF, Kingspan Spectrum, Kingspan Polyester
Lengths:	1.5 m to 12 m
Thickness:	See table
Fire Performance:	Kingspan sheets in steel carries a spread of flame and smoke index rating of zero. FM 4451 and FM4471 approved
Product Tolerances:	Length: +/-7 mm (0 – 3,500 mm) / 0.5 mm for each metre Width: +/-2 mm Edge squareness: +/-3 mm
Curving:	N/A
Perforation:	The below perforation options are available

Dimensions and Weight

Substrate Thickness (mm)	0.70	0.80	0.90	1.00	1.20	1.50
Weight (kg/m ²) – Steel	10.61	12.13	13.64	15.16	18.19	22.74



Load Span – Structural Deck RD 200/750

Steel at 350 MPa Yield Strength – Wind Suction Load (KN/m²)

Profile Thickness (mm)	Span (mm)	Single				Double				Multiple			
		L/150	L/200	L/250	L/300	L/150	L/200	L/250	L/300	L/150	L/200	L/250	L/300
0.70	6000	2.06	1.57	1.28	1.09	2.50	2.50	2.50	2.46	2.91	2.91	2.91	2.46
	6250	1.84	1.41	1.15	0.97	2.31	2.31	2.31	2.19	2.69	2.69	2.61	2.19
	6500	1.65	1.26	1.03	0.88	2.15	2.15	2.15	1.96	2.49	2.49	2.33	1.96
	6750	1.48	1.14	0.93	–	2.00	2.00	2.00	1.76	2.32	2.32	2.09	1.76
	7000	1.34	1.03	0.85	–	1.87	1.87	1.87	1.59	2.16	2.16	1.89	1.59
	7250	1.22	0.94	–	–	1.75	1.75	1.71	1.44	2.02	2.02	1.71	1.44
	7500	1.11	0.86	–	–	1.64	1.64	1.55	1.31	1.90	1.90	1.55	1.31
	7750	1.02	–	–	–	1.54	1.54	1.42	1.20	1.79	1.75	1.42	1.20
8000	0.93	–	–	–	1.46	1.46	1.30	1.10	1.68	1.60	1.30	1.10	
0.80	6000	2.36	1.80	1.46	1.24	2.86	2.86	2.86	2.81	3.32	3.32	3.32	2.81
	6250	2.10	1.61	1.31	1.11	2.65	2.65	2.65	2.50	3.07	3.07	2.98	2.50
	6500	1.88	1.44	1.18	1.00	2.46	2.46	2.46	2.24	2.85	2.85	2.66	2.24
	6750	1.69	1.30	1.07	0.91	2.29	2.29	2.29	2.01	2.65	2.65	2.39	2.01
	7000	1.53	1.18	0.97	–	2.13	2.13	2.13	1.82	2.47	2.47	2.16	1.82
	7250	1.39	1.07	0.88	–	2.00	2.00	1.95	1.65	2.31	2.31	1.95	1.65
	7500	1.27	0.98	–	–	1.88	1.88	1.78	1.50	2.17	2.17	1.78	1.50
	7750	1.16	0.90	–	–	1.76	1.76	1.62	1.37	2.04	2.00	1.62	1.37
8000	1.07	–	–	–	1.66	1.66	1.49	1.26	1.92	1.83	1.49	1.26	
0.90	6000	2.65	2.02	1.65	1.40	3.22	3.22	3.22	3.16	3.74	3.74	3.74	3.16
	6250	2.36	1.81	1.47	1.25	2.98	2.98	2.98	2.82	3.45	3.45	3.35	2.82
	6500	2.12	1.62	1.33	1.13	2.76	2.76	2.76	2.52	3.20	3.20	2.99	2.52
	6750	1.90	1.46	1.20	1.02	2.57	2.57	2.57	2.26	2.98	2.98	2.69	2.26
	7000	1.72	1.33	1.09	0.93	2.40	2.40	2.40	2.04	2.78	2.78	2.43	2.04
	7250	1.56	1.21	0.99	0.85	2.25	2.25	2.20	1.85	2.60	2.60	2.20	1.85
	7500	1.43	1.11	0.91	–	2.11	2.11	2.00	1.69	2.44	2.44	2.00	1.69
	7750	1.31	1.01	–	–	1.99	1.99	1.82	1.54	2.30	2.25	1.82	1.54
8000	1.20	0.94	–	–	1.87	1.87	1.67	1.42	2.16	2.05	1.67	1.42	
1.00	6000	2.95	2.25	1.83	1.55	3.58	3.58	3.58	3.52	4.15	4.15	4.15	3.52
	6250	2.62	2.01	1.64	1.39	3.31	3.31	3.31	3.13	3.84	3.84	3.72	3.13
	6500	2.35	1.80	1.47	1.25	3.07	3.07	3.07	2.80	3.56	3.56	3.33	2.80
	6750	2.12	1.63	1.33	1.14	2.86	2.86	2.86	2.52	3.31	3.31	2.99	2.52
	7000	1.91	1.47	1.21	1.04	2.67	2.67	2.67	2.27	3.09	3.09	2.70	2.27
	7250	1.74	1.34	1.11	0.95	2.50	2.50	2.44	2.06	2.89	2.89	2.44	2.06
	7500	1.58	1.23	1.01	0.87	2.34	2.34	2.22	1.88	2.71	2.71	2.22	1.88
	7750	1.45	1.13	0.93	–	2.21	2.21	2.05	1.72	2.55	2.49	2.05	1.72
8000	1.33	1.04	0.86	–	2.08	2.08	1.86	1.57	2.40	2.28	1.86	1.57	
1.20	6000	3.53	2.70	2.20	1.86	4.29	4.29	4.29	4.22	4.98	4.98	4.98	4.22
	6250	3.15	2.41	1.96	1.67	3.97	3.97	3.97	3.75	4.60	4.60	4.47	3.75
	6500	2.82	2.16	1.77	1.50	3.68	3.68	3.68	3.36	4.27	4.27	3.99	3.36
	6750	2.54	1.95	1.60	1.36	3.43	3.43	3.43	3.02	3.97	3.97	3.59	3.02
	7000	2.30	1.77	1.45	1.24	3.20	3.20	3.20	2.73	3.71	3.71	3.23	2.73
	7250	2.09	1.61	1.33	1.14	3.00	3.00	2.93	2.47	3.47	3.47	2.93	2.47
	7500	1.90	1.47	1.22	1.05	2.81	2.81	2.66	2.25	3.26	3.26	2.66	2.25
	7750	1.74	1.35	1.12	0.96	2.65	2.65	2.43	2.06	3.06	2.99	2.43	2.06
8000	1.60	1.25	1.04	0.89	2.50	2.50	2.23	1.89	2.88	2.74	2.23	1.89	
1.50	6000	4.42	3.37	2.75	2.33	5.36	5.36	5.36	5.27	6.23	6.23	6.23	5.27
	6250	3.94	3.01	2.46	2.09	4.96	4.96	4.96	4.69	5.76	5.76	5.58	4.69
	6500	3.53	2.70	2.21	1.88	4.60	4.60	4.60	4.20	5.34	5.34	4.99	4.20
	6750	3.17	2.44	2.00	1.70	4.29	4.29	4.29	3.77	4.97	4.97	4.48	3.77
	7000	2.87	2.21	1.82	1.55	4.00	4.00	4.00	3.41	4.64	4.64	4.04	3.41
	7250	2.61	2.01	1.66	1.42	3.75	3.75	3.66	3.09	4.34	4.34	3.66	3.09
	7500	2.38	1.84	1.52	1.31	3.52	3.52	3.33	2.82	4.07	4.07	3.33	2.82
	7750	2.18	1.69	1.40	1.21	3.31	3.31	3.04	2.57	3.83	3.74	3.04	2.57
8000	2.00	1.56	1.29	1.12	3.12	3.12	2.79	2.36	3.60	3.42	2.79	2.36	

Notes:

1. Deflection limits as shown on the table above.
2. The values in this load-span table consider load factors of 1.50 for dead load and 1.50 for imposed and wind loads.
3. The minimum bearing width allowed for to generate the values in this load span is 60 mm.
4. Detailed static calculations based on project loadings shall supersede this load span table.

Structural Deck – 200/750

Technical Data

Load Span – Structural Deck RD 200/750

Steel at 350 MPa Yield Strength – Imposed Load (KN/m²)

Profile Thickness (mm)	Span (mm)	Single				Double				Multiple			
		L/150	L/200	L/250	L/300	L/150	L/200	L/250	L/300	L/150	L/200	L/250	L/300
0.70	6000	2.61	1.92	1.50	1.22	2.83	2.83	2.83	2.83	3.11	3.11	3.11	3.11
	6250	2.29	1.68	1.31	1.06	2.71	2.71	2.71	2.71	2.98	2.98	2.98	2.79
	6500	2.02	1.47	1.15	0.93	2.58	2.58	2.58	2.47	2.86	2.86	2.86	2.47
	6750	1.79	1.30	1.01	-	2.38	2.38	2.38	2.18	2.75	2.75	2.65	2.18
	7000	1.58	1.15	0.88	-	2.20	2.20	2.20	1.94	2.60	2.60	2.36	1.94
	7250	1.41	1.02	-	-	2.04	2.04	2.04	1.73	2.41	2.41	2.11	1.73
	7500	1.26	0.90	-	-	1.89	1.89	1.89	1.55	2.24	2.24	1.89	1.55
	7750	1.12	-	-	-	1.76	1.76	1.70	1.39	2.09	2.09	1.70	1.39
8000	1.01	-	-	-	1.64	1.64	1.53	1.25	1.95	1.95	1.53	1.25	
0.80	6000	2.99	2.19	1.72	1.40	3.24	3.24	3.24	3.24	3.56	3.56	3.56	3.56
	6250	2.62	1.92	1.50	1.22	3.10	3.10	3.10	3.10	3.41	3.41	3.41	3.19
	6500	2.31	1.68	1.31	1.06	2.94	2.94	2.94	2.82	3.27	3.27	3.27	2.82
	6750	2.04	1.48	1.15	0.93	2.72	2.72	2.72	2.50	3.14	3.14	3.03	2.50
	7000	1.81	1.31	1.01	-	2.51	2.51	2.51	2.22	2.97	2.97	2.70	2.22
	7250	1.61	1.16	0.89	-	2.33	2.33	2.33	1.98	2.75	2.75	2.41	1.98
	7500	1.44	1.03	-	-	2.16	2.16	2.16	1.77	2.56	2.56	2.16	1.77
	7750	1.28	0.92	-	-	2.02	2.02	1.94	1.59	2.39	2.39	1.94	1.59
8000	1.15	-	-	-	1.88	1.88	1.75	1.42	2.23	2.23	1.75	1.42	
0.90	6000	3.36	2.47	1.93	1.57	3.64	3.64	3.64	3.64	4.00	4.00	4.00	4.00
	6250	2.95	2.16	1.68	1.37	3.49	3.49	3.49	3.49	3.83	3.83	3.83	3.59
	6500	2.60	1.89	1.47	1.19	3.31	3.31	3.31	3.17	3.68	3.68	3.68	3.17
	6750	2.30	1.67	1.29	1.04	3.06	3.06	3.06	2.81	3.53	3.53	3.41	2.81
	7000	2.04	1.47	1.14	0.91	2.83	2.83	2.83	2.50	3.34	3.34	3.04	2.50
	7250	1.81	1.31	1.00	-	2.62	2.62	2.62	2.23	3.10	3.10	2.71	2.23
	7500	1.62	1.16	0.88	-	2.44	2.44	2.43	1.99	2.88	2.88	2.43	1.99
	7750	1.44	1.03	-	-	2.27	2.27	2.18	1.78	2.68	2.68	2.18	1.78
8000	1.29	0.92	-	-	2.11	2.11	1.96	1.60	2.51	2.51	1.96	1.60	
1.00	6000	3.73	2.74	2.14	1.75	4.04	4.04	4.04	4.04	4.45	4.45	4.45	4.45
	6250	3.27	2.40	1.87	1.52	3.87	3.87	3.87	3.87	4.26	4.26	4.26	3.99
	6500	2.88	2.10	1.64	1.32	3.68	3.68	3.68	3.52	4.08	4.08	4.08	3.52
	6750	2.55	1.85	1.44	1.16	3.40	3.40	3.40	3.12	3.92	3.92	3.79	3.12
	7000	2.26	1.64	1.26	1.01	3.14	3.14	3.14	2.77	3.71	3.71	3.37	2.77
	7250	2.01	1.45	1.11	0.89	2.91	2.91	2.91	2.47	3.44	3.44	3.01	2.47
	7500	1.80	1.29	0.98	-	2.71	2.71	2.70	2.21	3.20	3.20	2.70	2.21
	7750	1.61	1.15	0.87	-	2.52	2.52	2.42	1.98	2.98	2.98	2.42	1.98
8000	1.44	1.02	-	-	2.35	2.35	2.18	1.78	2.78	2.78	2.18	1.78	
1.20	6000	4.48	3.29	2.57	2.10	4.85	4.85	4.85	4.85	5.33	5.33	5.33	5.33
	6250	3.93	2.88	2.24	1.82	4.65	4.65	4.65	4.65	5.11	5.11	5.11	4.79
	6500	3.46	2.53	1.96	1.59	4.42	4.42	4.42	4.23	4.90	4.90	4.90	4.23
	6750	3.06	2.22	1.72	1.39	4.07	4.07	4.07	3.74	4.71	4.71	4.55	3.74
	7000	2.72	1.97	1.52	1.22	3.77	3.77	3.77	3.33	4.45	4.45	4.05	3.33
	7250	2.42	1.74	1.34	1.07	3.49	3.49	3.49	2.97	4.13	4.13	3.62	2.97
	7500	2.15	1.55	1.18	0.94	3.25	3.25	3.24	2.65	3.84	3.84	3.24	2.65
	7750	1.93	1.37	1.04	-	3.02	3.02	2.91	2.38	3.58	3.58	2.91	2.38
8000	1.73	1.22	0.92	-	2.82	2.82	2.62	2.14	3.34	3.34	2.62	2.14	
1.50	6000	5.60	4.11	3.22	2.62	6.07	6.07	6.07	6.07	6.67	6.67	6.67	6.67
	6250	4.91	3.60	2.81	2.28	5.81	5.81	5.81	5.81	6.39	6.39	6.39	5.99
	6500	4.33	3.16	2.45	1.99	5.52	5.52	5.52	5.28	6.13	6.13	6.13	5.28
	6750	3.83	2.78	2.15	1.74	5.09	5.09	5.09	4.68	5.89	5.89	5.69	4.68
	7000	3.39	2.46	1.90	1.52	4.71	4.71	4.71	4.16	5.56	5.56	5.06	4.16
	7250	3.02	2.18	1.67	1.33	4.37	4.37	4.37	3.71	5.16	5.16	4.52	3.71
	7500	2.69	1.93	1.47	1.17	4.06	4.06	4.05	3.32	4.80	4.80	4.05	3.32
	7750	2.41	1.72	1.30	1.03	3.78	3.78	3.64	2.97	4.47	4.47	3.64	2.97
8000	2.16	1.53	1.15	0.90	3.52	3.52	3.27	2.67	4.18	4.18	3.27	2.67	

Notes:

1. Deflection limits as shown on the table above.
2. The values in this load-span table consider load factors of 1.50 for dead load and 1.50 for imposed and wind loads.
3. The minimum bearing width allowed for to generate the values in this load span is 60 mm.
4. Detailed static calculations based on project loadings shall supersede this load span table.

Contact details

Middle East, Africa, Turkey & Central Asia

**Kingspan Insulated Panels
Manufacturing LLC**
PO Box 60493
Dubai Investment Park
Jebel Ali Dubai, UAE

T: +971 (0) 4-8854 232
E: info@kingspanpanels.ae
www.kingspanpanels.ae

UK & Europe

Kingspan Limited
Greenfield Business Park 2
Bagillt Road | Holywell
CH8 7GJ

T: +44 (0) 1352 716 100
E: kingzip@kingspan.com
www.kingspanpanels.co.uk

Americas

Morin Corporation
685 Middle Street | Bristol
CT 06010 | U.S.A.
T: +1 (860) 584-0900
E: kingzip@kingspan.com
www.kingspanpanels.com

South East Asia

Kingspan Insulated Panels Pty Limited
1 Commonwealth Lane #07-26
Singapore 149544
T: +65 6264 5942
E: infosea@kingspan.com
www.kingspanpanels.sg

India

Kingspan Jindal Pvt. Ltd.
Old Manesar Road | Narsinghpur
Gurgaon - 122001 | Haryana | India
T: +91 124 4393 200
E: sales@kingspanjindal.com
www.kingspanjindal.com

Australia

Kingspan Insulated Panels Australia
38-52 Dunheved Circuit
St Marys | NSW 2760
T: +61 (02) 8889 3000
E: info@kingspanpanels.com.au
www.kingspanpanels.com.au

New Zealand

Kingspan Limited
97 Montreal Street | Sydenham
Christchurch
T: +64 (0) 800 121280
E: info@kingspanpanels.co.nz
www.kingspanpanels.co.nz

For the product offering in other markets please contact your local sales representative or visit www.kingspanpanels.com

Care has been taken to ensure that the contents of this publication are accurate, but Kingspan Limited and its subsidiary companies do not accept responsibility for errors or for information that is found to be misleading. Suggestions for, or description of, the end use or application of products or methods of working are for information only and Kingspan Limited and its subsidiaries accept no liability in respect thereof.