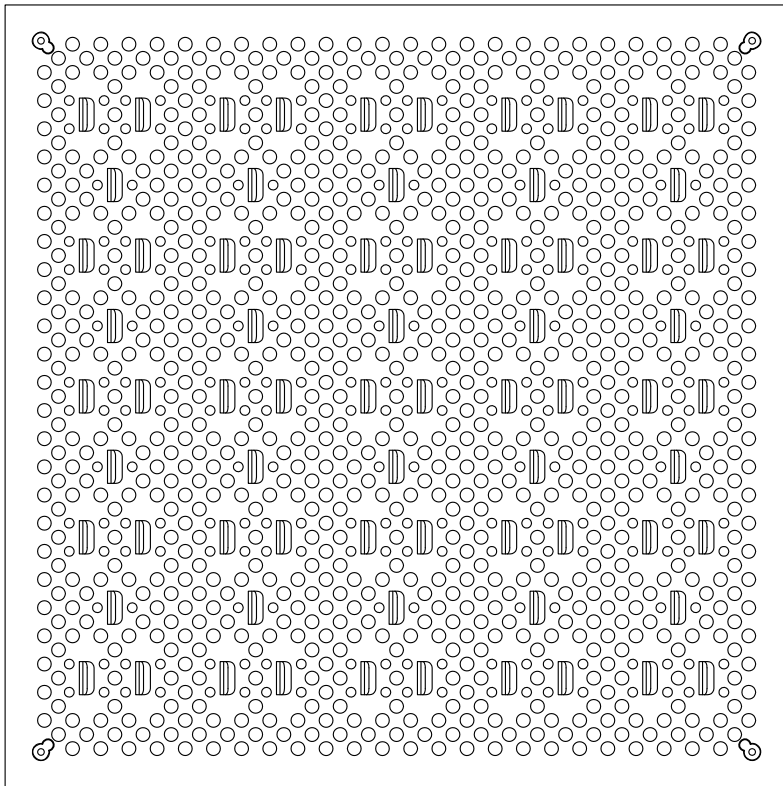


RACK  
FACE



## SPECIFICATIONS

### General information

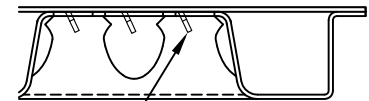
- 25% open area.
- 60cm square all steel construction.
- Concentrated load rating up to 1250 lbs. (560 kg)
- Available with or without galvanized slide damper.
- Protected from corrosion by anti-static powder coat finish - 25,000 to 20,000,000,000 ohms when tested at 500 volts per NFPA 99
- Patented intermingled airflow vanes for directional airflow
- Class A flame spread rating.
- Non-combustible material.
- Directional airflow for 93% capture index
- SparkLite White anti-static powder coat

## UNDERSTRUCTURE OPTIONS

- 60cm Bolted Stringer     120cm Bolted Stringer

## AIRFLOW OPTIONS

- Slide Damper



DIRECTIONAL VANES

HOT DIPPED GALVANIZED DAMPER

DAMPER ADJUSTS FROM TOP WITH ALLEN WRENCH



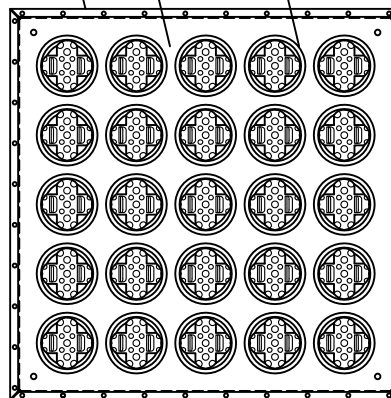
DIRECTIONAL LABEL

FULL HARD COLD ROLLED STEEL TOP SHEET

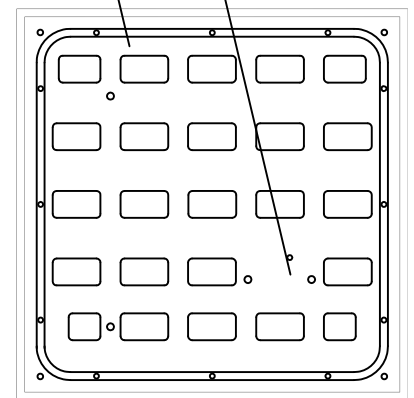
EPOXY PAINT FINISH INSIDE & OUT

DRAW QUALITY STEEL BOTTOM PAN

Static Pressure (Pa)	L/s (w/o damper)	L/s (w damper open)	L/s (w damper closed)
5	161	126	14
10	229	174	21
12.5	254	193	23
15	276	214	25
20	316	245	27
25	351	275	32
30	382	290	35
35	411	309	38
40	435	335	43
45	463	355	45
50	486	369	49



BOTTOM VIEW



BOTTOM VIEW WITH DAMPER

## System Performance Criteria (Tested on Actual Understructure)\*

Panel	Understructure	System Weight (kg/m <sup>2</sup> )	Static Loads			Rolling Loads		Impact Loads (kN)	Total Air Capture
			Design Loads (kN)	Safety Factor	Ultimate Load (kN)	10 Passes	10,000 Passes		
25% DPERF1250	Bolted Stringer	33.5	5.6	Min. > 2.0	11.12	-	-	.67	93%

\*All tests are performed using CISCA's Recommended Test Procedures for Access Floors with the exception of Design Load  
 1. Design Load is tested using CISCA's Concentrated Load test method on actual understructure instead of steel blocks. Design Load is determined by taking the lesser value of ultimate load (as defined by CISCA) divided by two or the point at which permanent damage begins to occur (yield point).  
 2. Safety factor is the multiple of Design load to the Ultimate Load. International standards and Tate recommend a minimum of 2.